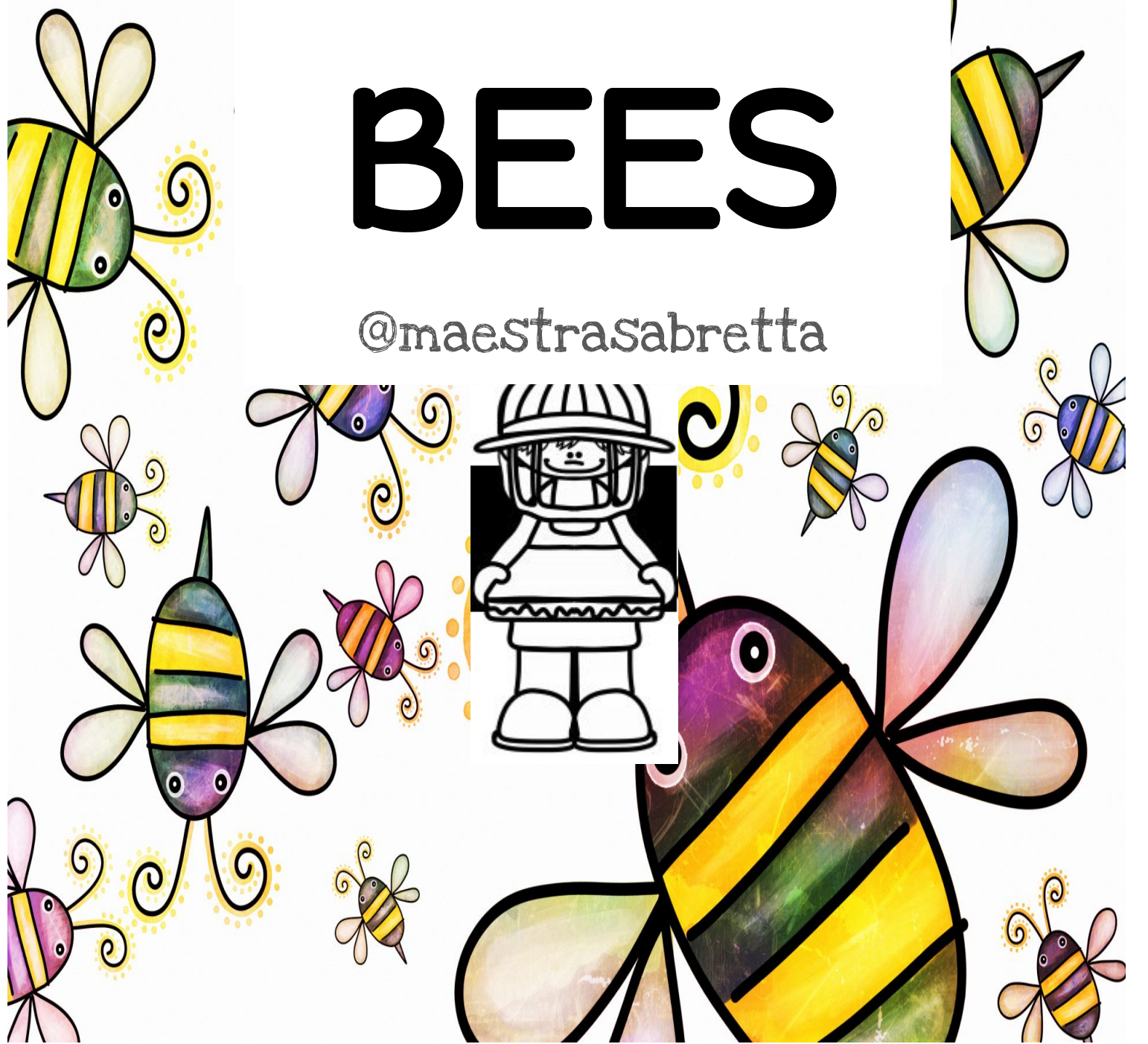




# BEEES

@maestrasabretta



# GENERAL INFORMATION



THE BEE ARE VERY IMPORTANT IN OUR WORLD.

BEEES HELP POLLINATE FLOWERS AND TREES.

THE MOST COMMON BEE IS THE HONEY BEE.

DRAW:



A FLOWER

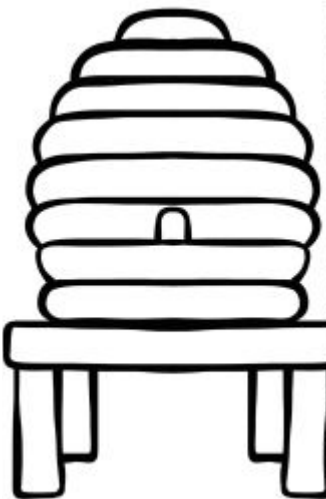


A TREE



HONEY

@MAESTRASABRETTA



**SOCIAL BEES** LIVE IN COLONIES.

THERE IS ONE QUEEN BEE.

THE QUEEN BEE LAYS THE EGGS.

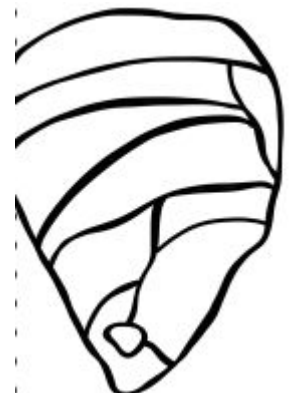
THE WORKER BEES MAKE THE HONEY.

**SOLITARY BEES** DON'T PRODUCE HONEY.

SOLITARY BEES DON'T LIVE IN COLONIES.

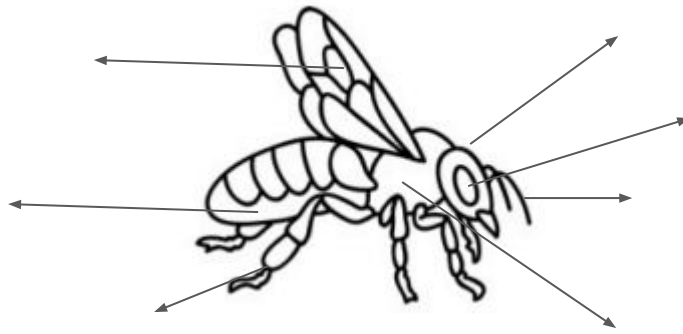
SOLITARY BEES HAVEN'T GOT A QUEEN.

SOLITARY BEES ARE VERY IMPORTANT POLLINATORS



@MAESTRASABRETTA

# BEE DESCRIPTION



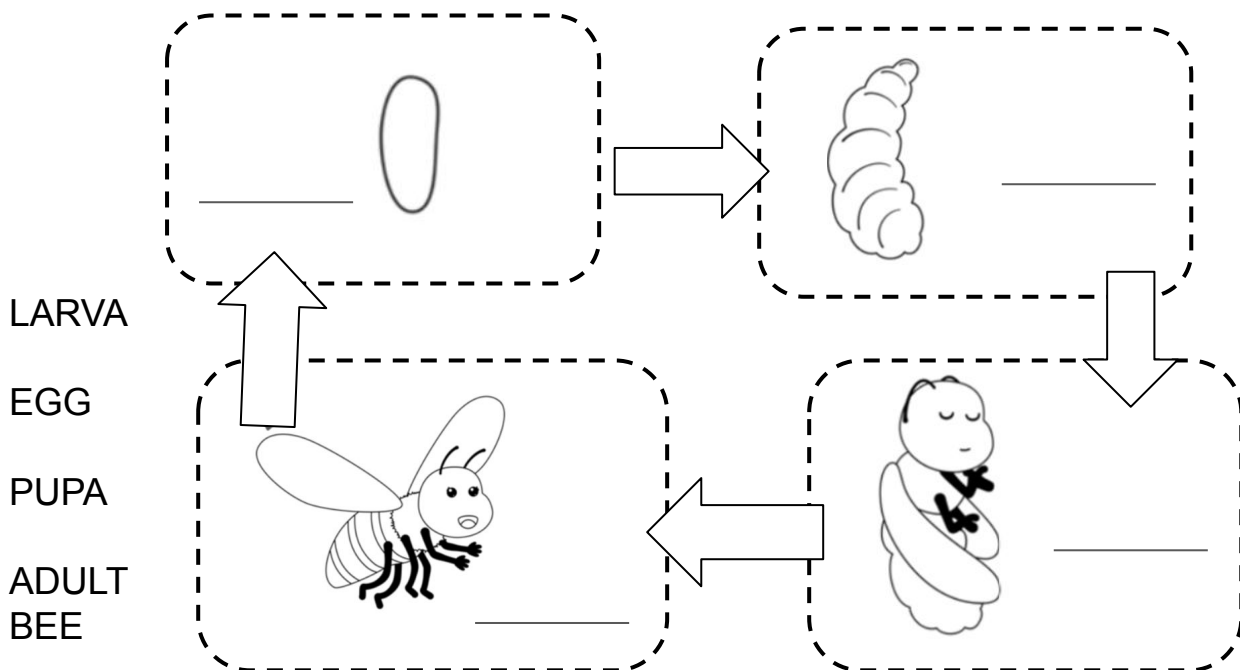
BEEES ARE INSECTS.  
THE BODY OF A BEE HAS GOT THREE PARTS:  
HEAD, ABDOMEN AND THORAX.

BEEES HAVE GOT TWO ANTENNAE, COMPOUND EYES, JOINTED LEGS,  
WINGS AND A HARD EXOSKELETON.

BEEES LIKE NECTAR.

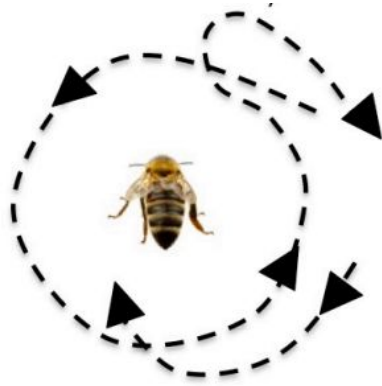
@MAESTRASABRETTA

# LIFE CYCLE OF A BEE

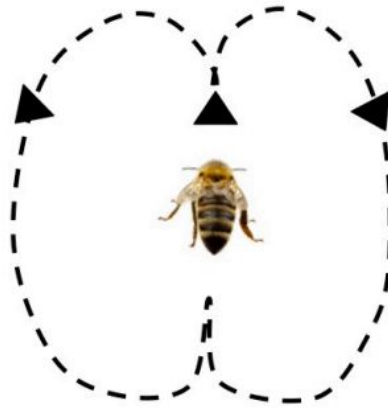


@MAESTRASABRETTA

# COMMUNICATION



Round Dance



Waggle Dance

BEEES COMMUNICATE BY DANCING.  
BEEES HAVE TWO TYPES OF DANCES.

THE ROUND DANCE MEANS THE NECTAR IS NEARBY.  
THE WAGGLE DANCE MEANS THE NECTAR IS FAR AWAY.

@MAESTRASABRETTA

## A - BEE - C... ORDER

drone
pupa
bee
nectar
queen
eggs
honey
worker
yellow
adult

---

---

---

---

---

---

---

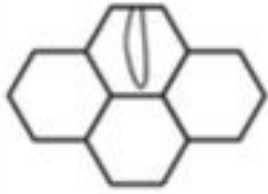
---

---

---

@MAESTRASABRETTA

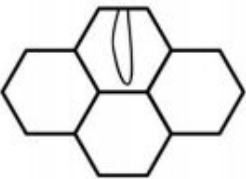
# MATCH



- pupa
- bee
- egg
- larva

@MAESTRASABRETTA

# WRITE THE LIFE CYCLE OF A BEE



FIRST \_\_\_\_\_  
\_\_\_\_\_



NEXT \_\_\_\_\_  
\_\_\_\_\_



THEN \_\_\_\_\_  
\_\_\_\_\_



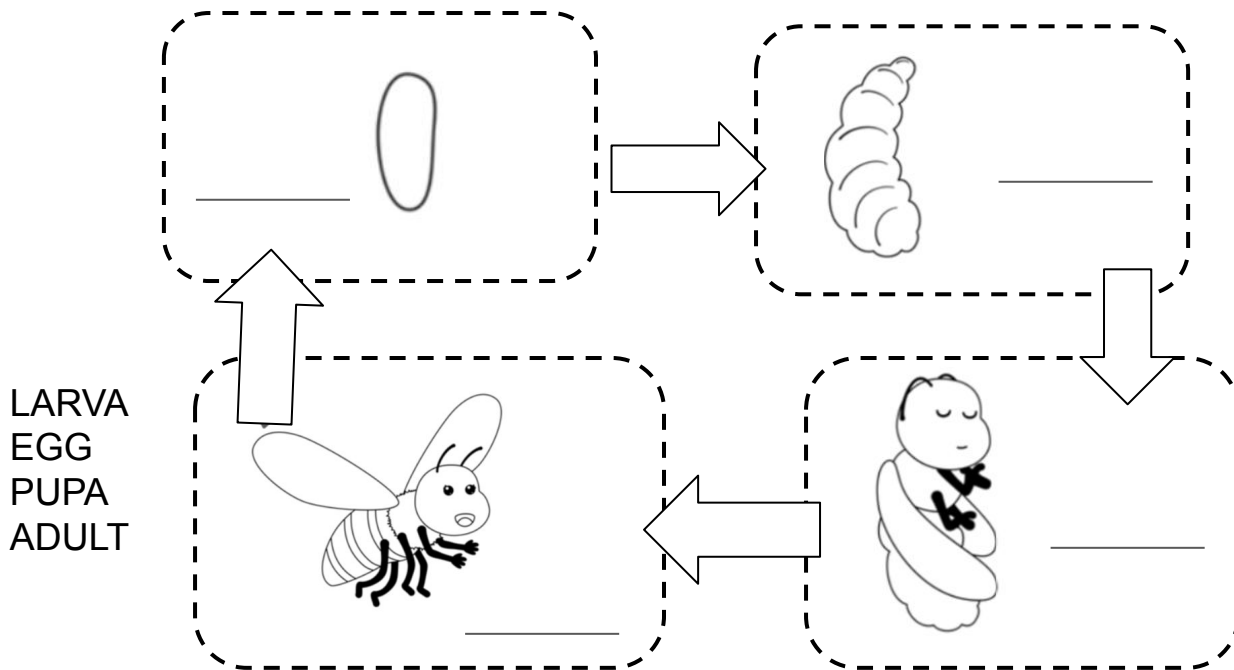
LAST \_\_\_\_\_  
\_\_\_\_\_

@MAESTRASABRETTA

True or false?

	TRUE	FALSE
Bees aren't very important.		
Bees help pollinate flowers.		
Social bees produce honey		
Solitary bees produce honey.		
Solitary bees live in colonies.		
Social bees haven't got a queen.		

Write the lifecycle of a bee in the correct order, then complete.



First there is an \_\_\_\_\_, next there is a \_\_\_\_\_,  
then \_\_\_\_\_, last \_\_\_\_\_.

(attenzione devi scrivere una parola per ogni spazio)



**Complete use the words in the box.**

BODY - ABDOMEN - INSECTS  
- HAS GOT - TWO  
WINGS - NECTAR

BEES ARE \_\_\_\_\_  
THE \_\_\_\_\_ OF A BEE \_\_\_\_\_ THREE PARTS:  
HEAD, \_\_\_\_\_ AND THORAX.

BEES HAVE GOT \_\_\_\_\_ ANTENNAE, COMPOUND EYES, JOINTED  
LEGS, \_\_\_\_\_ AND A HARD EXOSKELETON.

BEES LIKE \_\_\_\_\_.

**Match questions and answers.**

Are solitary bees important pollinators?

Do bees communicate by dancing?

Have bees four types of dances?

What does the round dance mean?

What does the waggle dance means?

It means the nectar is nearby.

It means the nectar is far away.

Yes, they are.

Yes, they do.

No, they haven't.